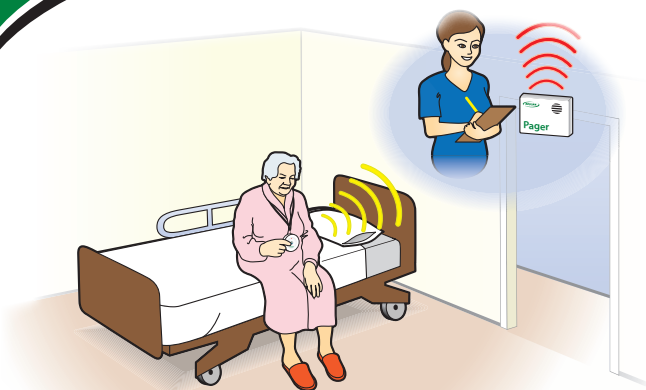


Call For Help & Prevent Falls

Two Call Buttons with Pager



Call for help with the push of a button!

- Quiet at the bedside
- Portable pager with adjustable tone options
- Up to 300 ft. range
- Lanyard straps and plastic wall-mounting cradle included with call buttons

Batteries Included

Call Button:

1-A23 Battery (ea.)

Caregiver Pager:

2-AA Batteries

Range

Call Button to Pager
- Up to 300 ft.

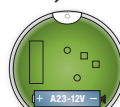
Step 1

- Install batteries in pager & select tone on side.



Step 2

- Gently pry open call button with a flat head screwdriver on the bottom of the button to install battery.



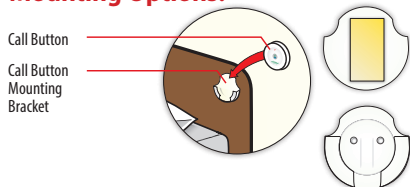
Step 3

Test System

- Press call button
- Pager will sound
- Switch pager off to reset



Mounting Options:



A. Wall Mount with Double Stick Tape

The mounting brackets may be affixed to most smooth, clean surfaces with the included double stick tape.

B. Wall Mount with Screws (not included)

The mounting bracket may be more securely mounted to walls or headboards with screws. Use the recessed guides for screw placement on the bracket

C. Use provided Lanyard

Put loop over peg when installing battery into call button



Top view of Call Button



Model No: TL-5102TP
FCC ID: 2A4WH-QSFO07

This device complies with Part 15 of the FCC Rules. Operation is subject to the following two conditions: (1) this device may not cause harmful interference, and (2) this device must accept any interference received, including interference that may cause undesired operation.

90 Day Manufacturer Warranty

System Code: TL-5102TP



Smart Caregiver Corporation has been a trusted name and industry pioneer in Fall Prevention & Anti-Wandering Solutions for over 20 years. Each of our systems must pass rigorous testing and exceeds industry standards for quality and reliability. Our world-class customer service team is on staff to ensure your 100% satisfaction. Contact us at (800) 650-3637 if you have any questions or concerns.



Call For Help & Prevent Falls

Two Call Buttons with Pager

IMPORTANT INFORMATION: This wireless device and compatible components rely on wireless technology which is subject to physical and environmental considerations. **These products do not have an out of range function and as such should be tested periodically in the setting in which they are to be used to understand their area of effective operation.** Please be aware that the transmitter will not be 100% accurate if it is out of range at any time. Wireless systems and monitors are intended as an adjunct to good caregiving practices and are not a substitute for proper staffing and resident management practices. We recommend that all personnel receive periodic training in the operation of these systems and that the systems are tested before each use.

WARNING: Failure to comply with warning may result in injury or death. This device is not suitable for all individuals. Other devices may be required. This device is not a substitute for direct visual monitoring by caregiver. The manufacturer does not claim that this device will stop elopement and or stop falls. This device is designed to augment caregivers' comprehensive resident mobility management program. Test this device before each use. Read the instructions and Legal Disclaimer.

The Smart Caregiver Corporation wireless devices are designed to be installed by the end-user. As such, it is the entire responsibility of the buyer to insure that the system is properly installed and tested. Further, the system is not designed to replace good caregiving practices including, but not limited to:

- A.) Direct resident supervision
- B.) Adequate training for staff personnel for elopement
- C.) Testing of the system before each use