

433-EC Economy Cordless Alarm



Important Information:

The 433-EC Economy Cordless Alarm and compatible components rely on wireless technology which is subject to physical and environmental considerations. These products do not have an out of range function and as such should be tested periodically in the setting in which they are to be used to understand their area of effective operation. Please be aware that the transmitter will not be 100% accurate if it is out of range at anytime. Wireless systems and monitors are intended as an adjunct to good caregiving practices and are not a substitute for proper staffing and patient management practices. We recommend that all personnel receive periodic training in the operation of these systems and that the systems are tested before each use.

WARNING: Failure to comply with warning may result in injury or death. This device is not suitable for all individuals. Other devices may be required. This device is not a substitute for visual monitoring by caregiver. The manufacturer does not claim that this device will stop elopement and or stop falls. This device is designed to augment caregivers' comprehensive resident mobility management program. Test this device before each use. Read the instructions and Legal Disclaimer.

The Smart Caregiver Corporation 433-EC Economy Cordless Alarm is designed to be installed by the end-user. As such, it is the entire responsibility of the buyer to insure that the system is properly installed and tested. Further, the system is not designed to replace good caregiving practices including, but not limited to:

- A.) Direct patient supervision.
- B.) Adequate training for staff personnel for fall prevention and elopement.
- C.) Testing of the system before each use.

WHERE PERMISSIBLE, IT IS THE SELLER'S INTENT TO LIMIT ANY LIABILITY FOR SPECIAL, CONSEQUENTIAL OR INCIDENTAL ECONOMIC DAMAGES TO REFUND OF THE PURCHASE PRICE OR REPLACEMENT OF THE GOODS. SELLER DISCLAIMS ANY LIABILITY FOR COMPENSATORY OR OTHER DAMAGES ARISING OUT OF THE USE OF THE GOODS.

WARNING: The manufacturer does not claim that this device will stop elopement and/or stop falls. This device is designed to augment caregivers' comprehensive resident mobility management program. This product is to be used by a licensed caregiver only.

Limited Warranty: Seller warrants that the goods sold will be free from defects of workmanship and manufacturing, for a period of one year from the date of sale. Other than this limited warranty, seller makes no express or implied warranties. Except for this limited warranty, NO EXPRESS OR IMPLIED WARRANTIES ARE GIVEN AND NO AFFIRMATION OF SELLER, BY WORDS OR ACTION, WILL CONSTITUTE A WARRANTY. THE GOODS BEING PURCHASED ARE BEING SOLD ON A "WITH ALL FAULTS" BASIS. THE ENTIRE RISK AS TO THE QUALITY AND PERFORMANCE OF THE GOODS IS WITH THE BUYER. SHOULD THE GOODS PROVE DEFECTIVE FOLLOWING THEIR PURCHASE, THE BUYER, AND NOT THE MANUFACTURER, DISTRIBUTOR OR RETAILER, ASSUMES THE ENTIRE COST OF ALL NECESSARY INSTALLATION, SERVICING OR REPAIRS.

Need Set-Up Help?

Call Smart Caregiver's Friendly Customer Service Team at (800) 650-3637



SMART CAREGIVER CORPORATION

1229 North McDowell Blvd., Petaluma, CA. 94954

sales@smartcaregivercorp.com | www.smartcaregivercorp.com

Installation and Use Instructions

433-EC Economy Cordless Alarm

The Smart 433-EC Economy Cordless Alarm is a wireless, wall mounted alarm that can receive a signal from numerous wireless components (sold separately) such as motion sensors, fall monitors, bed and chair sensor pads, floor mats and nurse call buttons.*

One Year Warranty

Features

- On/Off switch
- Adjustable Volume
- Adjustable Tone
- Battery or AC powered (*optional AC adapter sold separately, item code AC-04*)
- Wall Mount (*mounting screws included*)

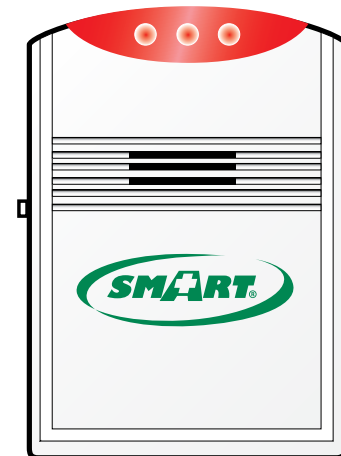
433-EC Package Contents:

- 433-EC Economy Cordless Alarm
- 2 Screws

433-EC Optional Accessories

(*sold separately*):

- 433-NCA Monitor Adaptor
- 433-NC Nurse Call Button
- 433-RB Reset Switch
- 433-MS Motion Sensor
- 433-EXT Windor/Door Exit Sensor
- Smart CordLess® bed and chair sensor pads
- Smart CordLess® floor mats
- AC Adapter (AC-04)



* Some devices may require a wireless transmitter sold separately.

Installation and Use Instructions

433-EC Economy Cordless Alarm

Step 1

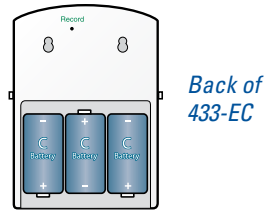
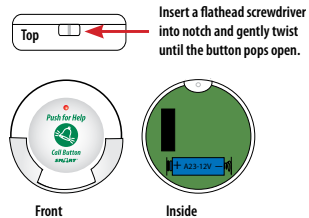
INSTALL BATTERIES IN 433-EC (not included)

Install 3 "C" batteries into the 433-EC battery compartment. An optional AC adapter is available separately, (item code AC-04).

INSTALL BATTERIES IN COMPONENTS

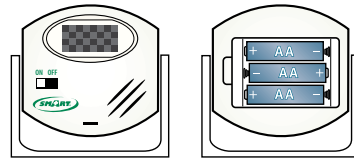
433-NC Nurse Call Button (optional)

Batteries included



433-MS Motion Sensor (optional)

Batteries not included



433-EXT Window/Door Exit Sensor (optional)

Batteries included



433-NCA Adapter (optional)



Step 2

TURN ON THE 433-EC AND SET ALARM TONE

Select "CHIME" on the switch on the right side of the Economy Cordless Alarm (the "ALARM" tone functions identically as the "CHIME" tone).

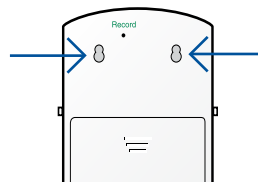
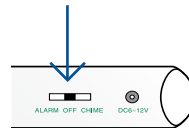
IMPORTANT:

The 433-EC alarm chime will sound continuously when triggered by a component until the 433-EC is reset by turning it off and on again.

If the 433-EC is being used with a CordLess® sensor pad, the chime will sound continuously when pressure is released from the pad. The 433-EC can be reset by turning it off and on again or by placing pressure back on the CordLess® pad.

MOUNT THE 433-EC Economy Cordless Alarm (Optional)

The 433-EC may be mounted on a wall for optimum placement. Install the included screws aligned with the recessed mounting holes on the back of the unit.



Step 3

PROGRAM COMPONENTS TO THE 433-EC

Use a pen or pointed tool to press and hold the "Record" button on the back of the monitor. Release when the outer two LED lights on front are all solid. The Economy Cordless Alarm is now in programming mode.

433-NC or 433-RB: press and release the Call/Reset button. The outer two LED lights on the 433-EC will flash once to confirm programming. **Maximum Range: 150 Feet. Read Important Information on back panel of this document.**

433-MS: Turn the motion sensor on. The outer two LED lights on the 433-EC will flash once to confirm programming. **Maximum Range: 300 Feet. Read Important Information on back panel of this document.**

433-EXT: Touch the two parts of the Exit Alarm together. The outer two LED lights on the 433-EC will flash once to confirm programming. **Maximum Range: 250 Feet. Read Important Information on back panel of this document.**

CordLess® System: The transmitter must already be connected to a sensor pad and turned on. Place pressure on the sensor pad. The outer two LED lights on the 433-EC will flash once to confirm programming. FallGuard® Series monitors (TL-2100E, TL-2100CP, TL-2100S and TL-2100V) require a 433-NCA Wireless Adapter (must be purchased separately) in order to communicate with the 433-EC. **Maximum Range: 150 Feet. Read Important Information on back panel of this document.**

433-NCA: Plug the 433-NCA into the nurse call port on the side of the monitor before placing the 433-EC in programming mode. Once the 433-EC is ready, alarm your FallGuard monitor through it's connected device (i.e. floor mat, sensor pad, or seatbelt). The outer LED lights on the 433-EC will flash once to confirm programming. **Maximum Range: 250 Feet. Read Important Information on back panel of this document.**

EXIT PROGRAMMING

Once programming is complete, press and release the record button on the back of 433-EC. The outer two LED lights will blink once to confirm exiting programming mode.

TEST PROGRAMMING

Test all components before use. The center LED light will flash and the chosen tone will sound on the 433-EC to indicate when the alarm has been triggered.

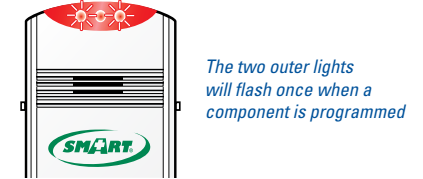
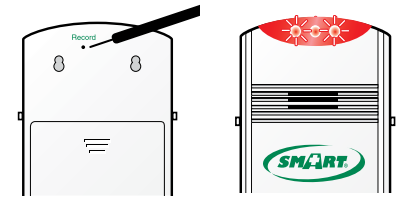
Usage

TO CLEAR ALL PROGRAMMING

Press and hold the "Record" button until the LED lights on the front are blinking. Release. Programming is now cleared.

✓ **TIP: when using the 433-EC Economy Cordless Alarm with a 433-CMU Central Monitoring Unit and 433-RB Reset Switch:**

Smart Caregiver recommends that the caregiver program the 433-RB to only the 433-EC, not the 433-CMU. This enables the caregiver to reset the 433-EC for noise abatement reasons, while retaining the call at the Central Monitoring Unit for safety purposes. Once the patient has been attended, the caregiver can reset the call at the Central Monitoring Unit.



CordLess® Transmitter



433-NCA Wireless Adaptor with FallGuard Monitor